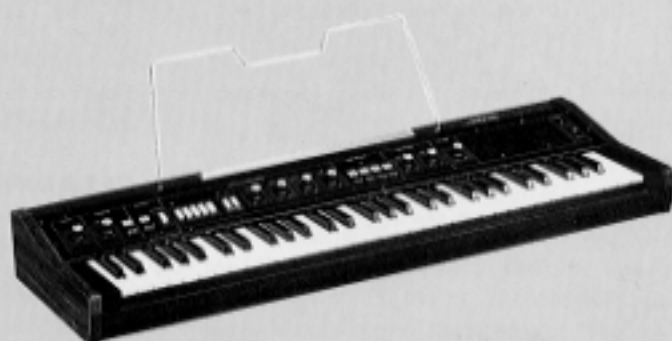


CP11

electronic piano operating manual



YAMAHA



CONGRATULATIONS

Congratulations on becoming an owner of the Yamaha CP11 Electronic Piano.

The CP11 offers advanced automatic bass, chord and rhythm features that have been developed using technology accumulated through years of experience producing some of the world's most sophisticated synthesizers, symphonic ensembles and other electronic instruments. In addition to live performance applications, the CP11 is ideally suited for casual home practice and performance as it features a built-in high-quality amplifier and speaker.

Please be sure to read this manual thoroughly in order to get maximum enjoyment from your Yamaha CP11 Electronic Piano.

CONTENTS

Precautions	1
Features and Functions/Connection	2
Operation/Basic Controls	4
Auto-Accompaniment	5
Specifications	6

PRECAUTIONS

LOCATION

Avoid placing your electronic piano in direct sunlight or close to a source of heat. It is also important to avoid locations in which the instrument is likely to be subjected to vibration, excessive dust, cold or moisture.

HANDLING

Avoid applying excessive force to the instruments knobs and switches.

POWER CORD

Always grip the power plug directly when unplugging. Removing the power plug from the wall socket by pulling on the power cord can result in damage to or shorting of the power cord.

Be sure to unplug your electronic piano if you will not be using it for an extended period of time.

RELOCATION

When moving the electronic piano once it has been set up, be sure to disconnect all cords that connect the instrument to other equipment. This will help to prevent accidental damage to or shorting of interconnection cables.

CONNECTION

Follow the "CONNECTION" instructions given in this manual carefully when setting up your electronic piano. Connection errors can lead to serious damage to the instrument, amplifier and speaker.

CLEANING

Do not use solvents such as benzine or thinner to clean your electronic piano, as these may cause discoloration or staining of the instrument's exterior. Use a soft, dry cloth.

SAVE THIS MANUAL

After studying this manual thoroughly, it should be stored in a safe place for future reference.

LIGHTNING

In the event of an electrical storm, the instrument's power cord should be unplugged to eliminate the possibility of serious damage.

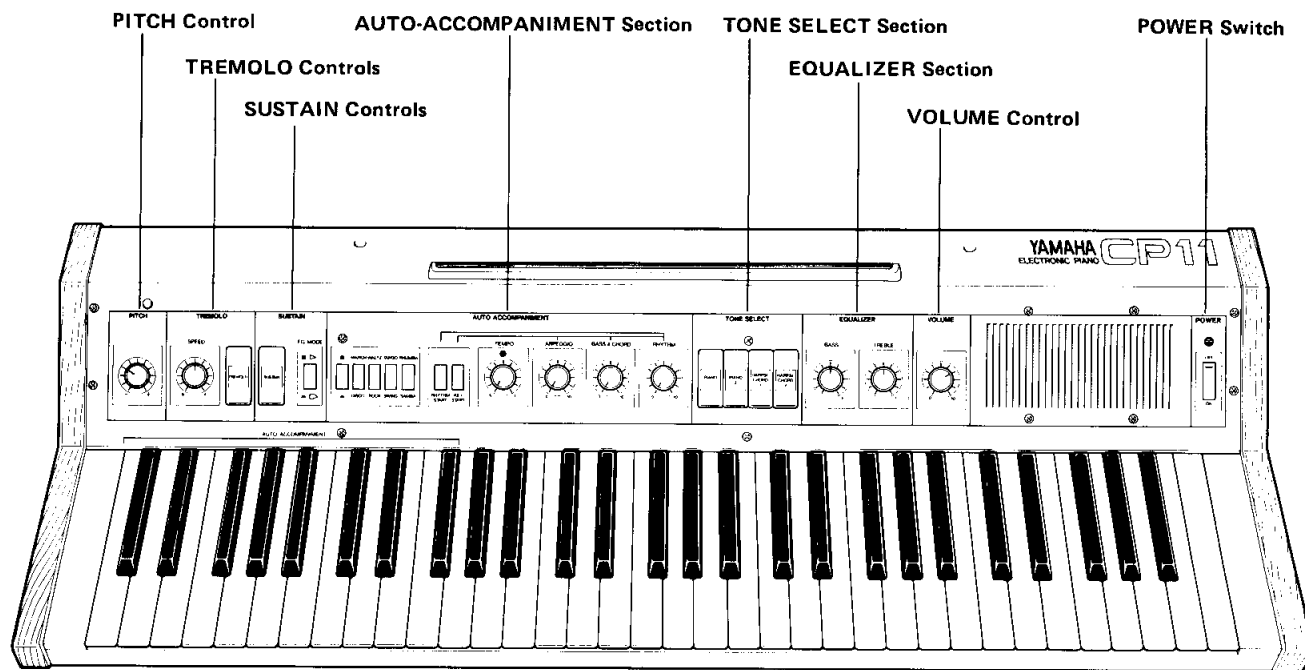
OTHER APPLIANCES

Use your electronic piano where its digital circuitry cannot be influenced by electromagnetic radiation from appliances such as televisions, radios, etc.

FEATURES AND FUNCTIONS CONNECTIONS

Since the CP11 features a built in amplifier and speaker, you can begin playing the instrument as soon as you plug in the power cord and turn on the power switch. In order to become familiar with the operation of the CP11, follow the procedure outlined below.

Name of the Control Blocks



* VOLTAGE SELECTOR (GENERAL MODEL ONLY)

If your CP11 has a voltage selector, check that it is set to your local voltage before you plug it in. If not properly set, reset the switch to indicate your supply voltage (110 to 130 or 220 to 240V).

1. Power Cord

Insert the CP11 power plug into the most convenient AC wall outlet.

2. Power Switch

Set the POWER switch located to the far right of the control panel to the ON position. The power indicator will light and the CP11 is ready to play.

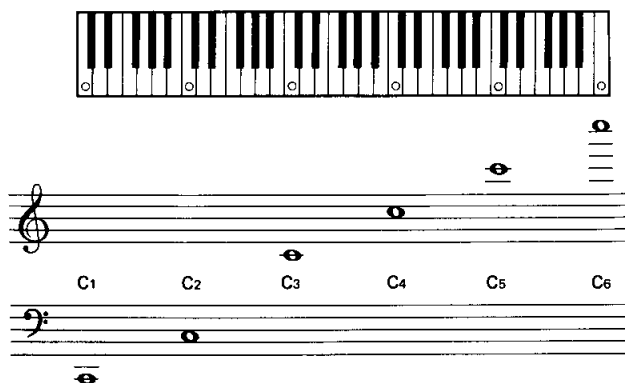
Now, set up the panel controls as follows:

- Depress the TONE SELECT PIANO 1 button.
- Turn all white knobs in the AUTO-ACCOMPANIMENT block to their minimum settings, and turn the RHYTHM START and KEY START buttons OFF (extended position).

- Gradually turn up the VOLUME control while depressing one of the CP11's keys and you should hear the corresponding note from the built-in speaker.
- Set all other knobs and switches as shown in the diagram.

With these settings, the CP11's AUTO-ACCOMPANIMENT functions are all turned off. The keyboard range is from C1 to C6 (61 keys, 5 octaves) with a maximum simultaneous output capability of 10 notes.

Keyboard Range



3. Connection To an External Speaker System

In order to use headphones or an external speaker system rather than the built-in speaker system, the headphones or amp/speaker must be connected to the appropriate jack on the CP11 rear panel.

- If connection is made to the rear-panel PHONES or OUTPUT jack, the internal speaker is automatically shut off.

1 OUTPUT

This jack provides the CP11 output signal to an external power amplifier, amp/speaker or mixer. A speaker with no built-in amplifier cannot be connected directly to this jack. A power amplifier and speaker system or an integrated amp/speaker must be used.

- Output Level = -10 dBm (line level)
Impedance = 600 ohms

2 FOOT PEDAL

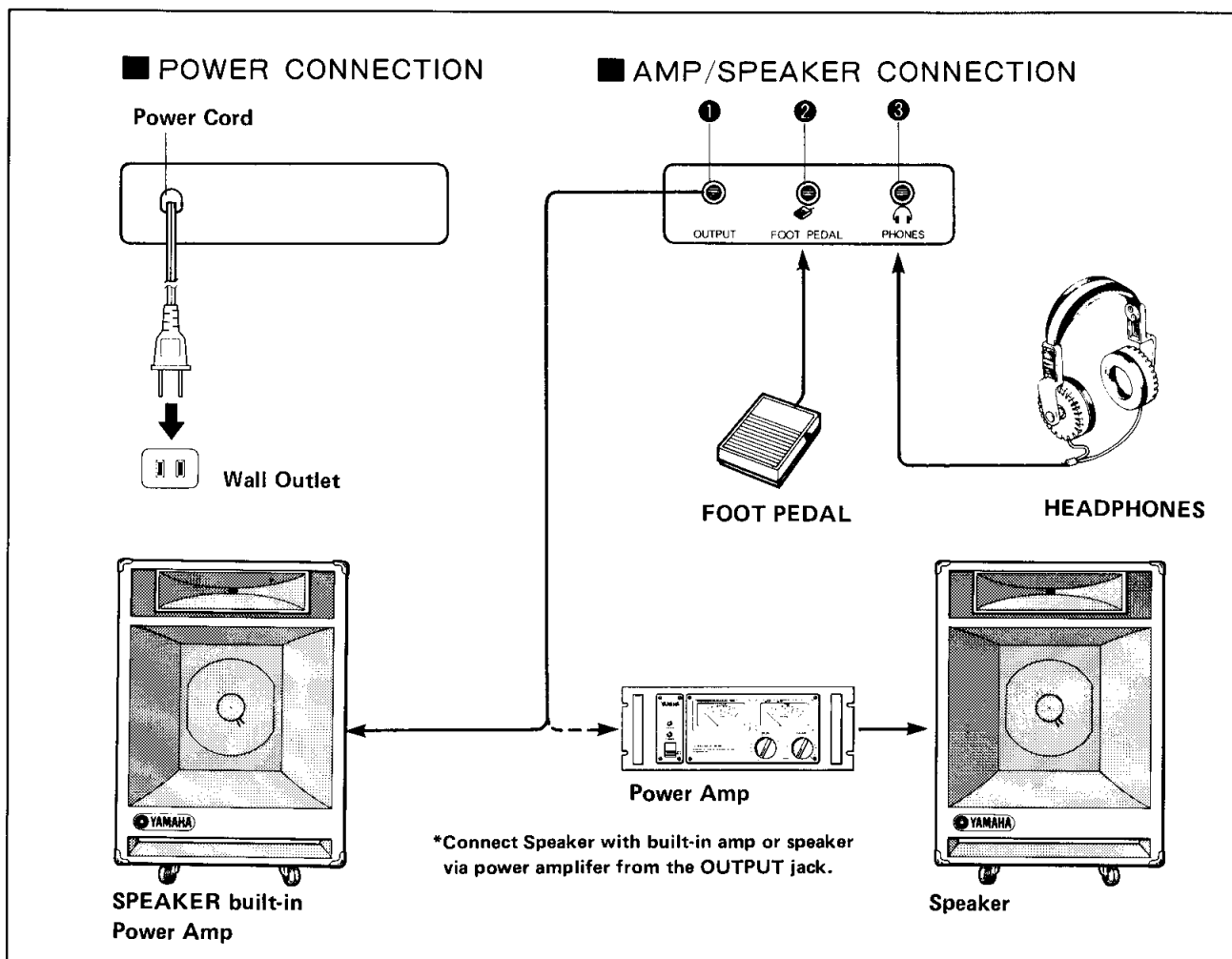
The FC-5 foot pedal (supplied) is connected to this jack. The foot pedal permits convenient foot control of the sustain on/off function as well as the auto-accompaniment arpeggio and bass chord memory functions.

When the front-panel SUSTAIN switch is ON, pressing the foot pedal activates the sustain effect. Further, if the foot pedal is turned on/off while the auto-accompaniment function is operating, the arpeggio and/or bass chord memory functions are correspondingly turned on/off.

For details refer to the AUTO-ACCOMPANIMENT text in this manual.

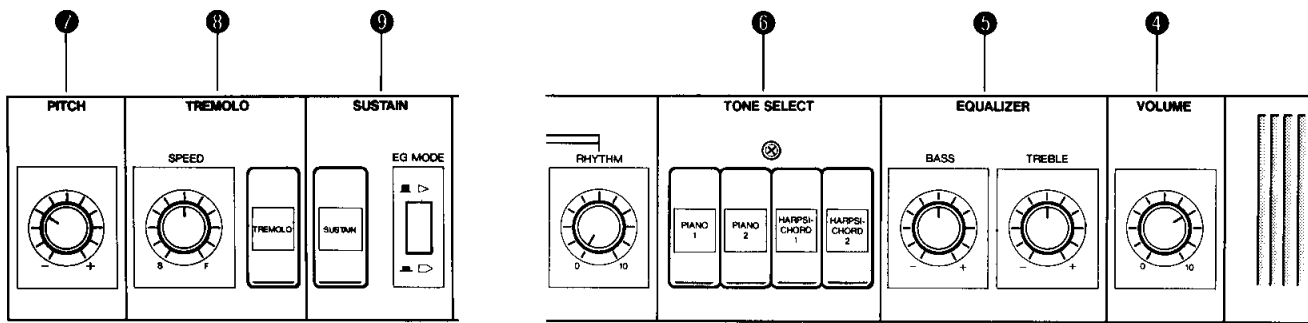
3 HEADPHONES

A pair of headphones can be connected to this jack. Either special monaural keyboard headphones or standard stereo headphones can be used.



OPERATION

BASIC CONTROLS



After you have made all necessary connections and checked out the basic operation of the instrument, experiment with the following controls while playing the keyboard.

4 VOLUME

Adjusts the overall volume of the CP11 sound.

- When using an external amplifier and speaker system, setting the external amplifier volume control so that the most comfortable overall volume is obtained when the CP11 VOLUME control is set to about "8" results in the best sound quality.

5 EQUALIZER

The BASS and TREBLE EQUALIZER controls permit boost or cut of the low and high frequency ranges, respectively. These controls can be used to tailor the basic sound provided by the TONE SELECT switches for the best overall tonal effect. Normally, the BASS and TREBLE controls should be set to their center positions.

6 TONE SELECT

These switches determine the basic CP11 sound. There are four basic selections, PIANO 1 and PIANO 2, and HARPSICHORD 1 and HARPSICHORD 2. The sound created by the PIANO 1 selector is different from the PIANO 2 selector. The same is true for HARPSICHORD 1 and 2. Thus you can enjoy varied sound colors by selecting different combinations of the four tone selector switches.

- If all of these switches are turned off, no sound will be heard even if a key is depressed.
- These switches have no effect on the auto-accompaniment sound.

7 PITCH

This is the CP11 "tuning" knob. Turning this control towards the "+" end of the scale raises the instrument's overall pitch, while turning towards the "-" end of the scale lowers the overall pitch. Standard pitch of 440 Hz (A3) is obtained when the control is set just a little to the left of its center position. Control range is from 435 to 450 Hz.

8 TREMOLO

This block controls the CP11 tremolo sound. Tremolo controls further enhance the CP11's available sounds. Tremolo automatically and smoothly varies the output volume up and down. When the TREMOLO switch is turned ON, the tremolo effect is initiated at a speed determined by the setting of the SPEED control.

9 SUSTAIN

The SUSTAIN block incorporates two controls: a SUSTAIN switch and an EG MODE switch.

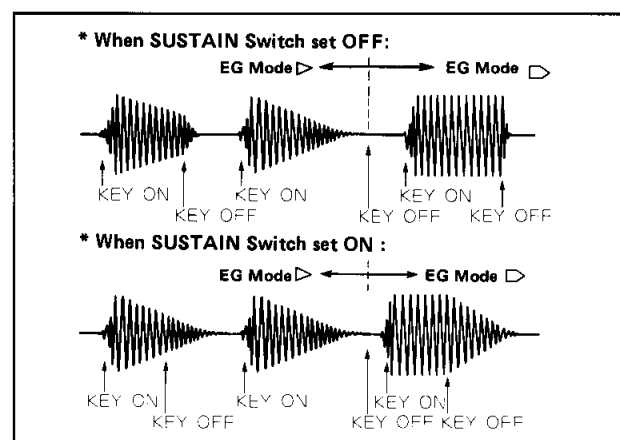
SUSTAIN

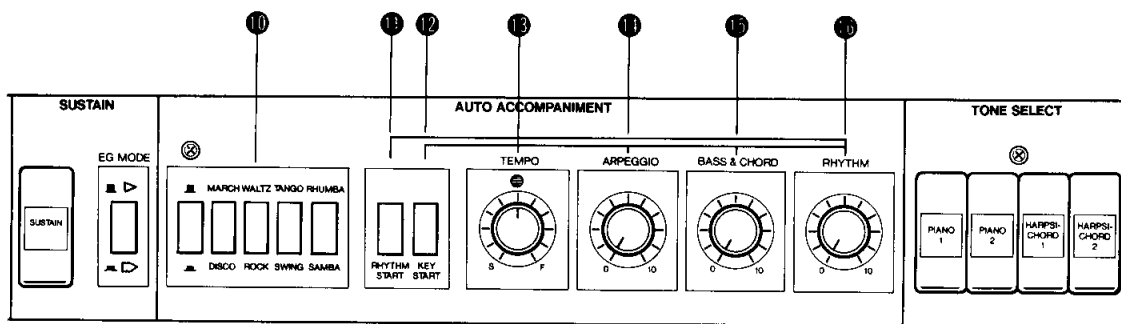
Turning this switch ON activates the sustain effect (a gradual decrease in the level of the sound).

EG MODE (Envelope Generator Mode)

This switch determines "when" the sound begins to decay. In the \triangleright position, the decay begins immediately after the initial note attack (when the key is initially pressed). The sound is completely cut off when the key is released, whether or not the sound has fully decayed. In the \triangleleft position, the sound stays at the initial attack level as long as the key is held. The gradual decay begins as soon as the key is released. This creates an organ-like envelope.

- The sustain effect can be turned on and off via a foot pedal connected to the rear-panel FOOT PEDAL jack. In this case, the front-panel SUSTAIN switch must be turned ON.





The CP11 AUTO-ACCOMPANIMENT block offers four automatic accompaniment functions: auto-rhythm, auto-bass, auto-chord and auto-arpeggio.

1. Rhythm Selection

10 RHYTHM SELECTOR SWITCHES

These switches permit selection of 8 different rhythm patterns. Depending on whether the leftmost switch (■/▲) in this group is in the upper or lower position, the corresponding rhythm pattern (upper or lower row) is selected by the four selector buttons.

2. Automatic Rhythm Start

11 RHYTHM START

This switch starts the auto-rhythm sound.

- This switch does not start the arpeggio or bass/chord sounds.

12 KEY START

When this switch is turned on, pressing any of the CP11 keys in the lower AUTO-ACCOMPANIMENT range (C1 to F2#) starts the auto-arpeggio, auto-bass, auto-chord and auto-rhythm functions. When the auto-accompaniment functions are operating, a total of 4 notes can be played simultaneously on the upper keyboard range (42 keys, G2 to C6).

- The auto-rhythm alone can be started using the RHYTHM START switch, and the auto-arpeggio and auto-bass/chord functions added later after pressing the KEY START switch.
- If the KEY START switch and a key in the upper-keyboard melody range are depressed simultaneously by mistake, the upper range notes (G2 to C6) may be cut off.

13 TEMPO

Adjusts the tempo of the AUTO-ACCOMPANIMENT. Turning this control towards the "S" end of the scale slows down the auto-accompaniment tempo, while turning to the "F" end of the scale speeds up the accompaniment.

14 ARPEGGIO

Adjusts the volume of the auto-arpeggio (arpeggio = broken chord) sound.

15 BASS & CHORD

Adjusts the volume of the auto-bass and auto-chord sounds.

16 RHYTHM

Adjusts the volume of the auto-rhythm sound.

3. Setting the Auto-Accompaniment Chord

After the KEY START switch has been pressed, the first auto-accompaniment chord and/or mid-performance chords are determined by depressing an appropriate key in the lower 19-key AUTO-ACCOMPANIMENT range of the CP11 keyboard (i.e. press the root of the intended chord, C for a C major chord, etc.). Once a chord has been initiated in this manner, it is memorized and continues until the next chord is initiated. Auto-accompaniment can be turned off by pressing the KEY START switch a second time. If a foot pedal is connected to the rear-panel FOOT PEDAL jack, the arpeggio and bass/chord memory functions can be turned off.

- If the foot pedal is turned OFF, the auto-arpeggio and auto-bass/chord stop as soon as the key is released. The rhythm sound is not affected.
- If the foot pedal is turned ON, or no foot pedal is connected, the arpeggio and bass/chord sounds are memorized and continue until the next chord is initiated.

CAUTION: The foot pedal controls both the sustain on/off and auto-accompaniment memory on/off functions.

* Auto-Accompaniment Chord Modes

Major, minor or seventh auto-accompaniment chords are initiated as follows.

Major: Play the 1st (root) and 5th of the desired chord + the major 3rd if desired.

Minor: Play the 1st, flatted 3rd (minor 3rd) and 5th of the desired chord.

Seventh: Play the 1st and 7th of the desired chord.

Minor Seventh: Play the 1st, flatted 3rd and 7th of the desired chord.

SPECIFICATIONS

Keyboard	61 keys, from C1 to C6
Simultaneous Voices	
when Auto-Accompaniment inactivated . . .	10 voices within whole range of keyboard
when Auto-Accompaniment activated . . .	Melody part : 4 voices, Auto-accompaniment part : 6 voices
PITCH Control	435 to 450 Hz at A3
TREMOLO Control	TREMOLO Tablet Switch : ON / OFF
SUSTAIN Control	SUSTAIN Tablet Switch : ON / OFF EG MODE Switch ■ : ▷ , ■ : ◁
AUTO ACCOMPANIMENT Section	Rhythm Select Switch ■ / ■ MARCH / DISCO WALTZ / ROCK TANGO / SWING RHUMBA / SAMBA RHYTHM START Push Switch : Start/Stop KEY START Switch : Key Synchronous Start TEMPO : ♩ = 43 to 300 Variable ARPEGGIO : Level Control BASS & CHORD : Level Control RHYTHM : Level Control
TONE SELECT Switch	PIANO 1, PIANO 2, HARPSICHORD 1, HARPSICHORD 2 Tablets
EQUALIZER Control	BASS, TREBLE Controls
Loudness Control	VOLUME Control
Power Control	POWER Switch
OTHERS	
Power Amplifier	Output : 5 Watts at 4 ohms load
Speaker	10 cm (4"), 4 ohms
REAR PANEL	HEADPHONES : 8 to 300 ohms FOOT PEDAL : Foot Switch FC-5 Connectable OUTPUT : 600 ohms, -10dBm
Power Requirement	U.S. & Canadian Models: 120V, 60Hz General Model: 110-130, 220-240V, selectable 50/60Hz
Power Consumption	10 Watts
Dimensions (W x H x D)	36¼ x 4¼ x 12½ inch, 925 x 108.2 x 322 cm
Weight	23.8 lbs, 10.8 kg
Finish	Rosewood grained
Accessories	Foot Pedal : FC-5, Score Stand

* Specifications and Design are subject to change due to improvement.

SERVICE

The CP11 are supported by Yamaha's worldwide network of factory trained and qualified dealer service personnel. In the event of a problem, contact your nearest Yamaha dealer.

SINCE 1887  **YAMAHA**
NIPPON GAKKI CO., LTD. HAMAMATSU, JAPAN