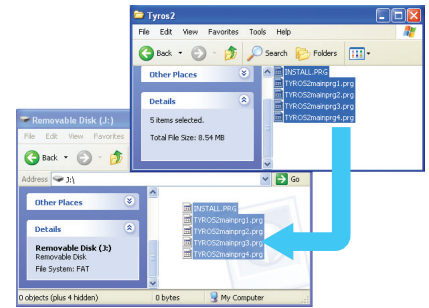


Tyros2 Installation Procedure

Caution: Do not turn off the power or remove the USB media during this operation.

1 Downloading the firmware

- 1) Download the Zip file.
- 2) Extract the five files included in the Zip file.
- 3) Insert the USB device into your computer.
- 4) Copy the extracted files into the root directory of the USB device.



2 Connecting the USB device

Connect the USB device containing the appropriate upgrade data to the USB TO DEVICE terminal on the instrument.

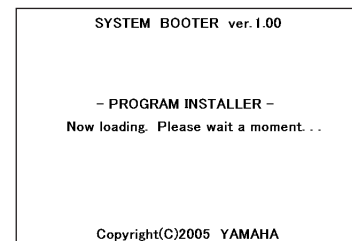
Caution: Make sure that the USB device is connected properly to the terminal. Do not try to force an incorrect connection; doing so may damage the terminal.



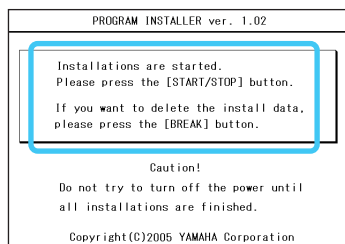
3 Installing the upgrade program

Simultaneously hold down the **[START/STOP]** button in the STYLE CONTROL section and turn on the power.

Keep holding down the **[START/STOP]** button until the following display is shown.



After a few moments, the following display appears.



Press the **[START/STOP]** button to start installation.

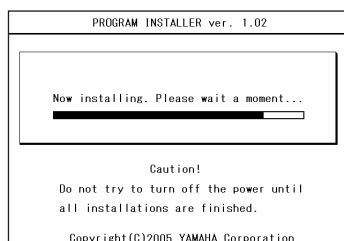
Go on to **step 4**. (Executing the installation).

Press the **[BREAK]** button to delete the data the upgrade data in the USB device.

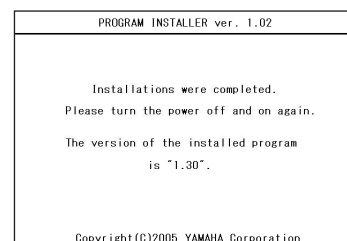
Go on to **step 5**. (Deleting the upgrade data).

4 Executing the installation

Press **[START/STOP]** button to start the installation.



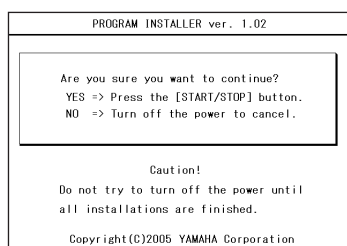
When the installation is completed, the following display appears.



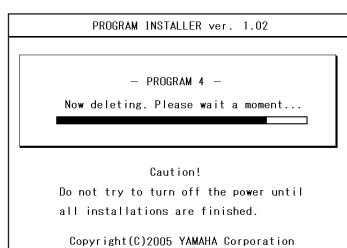
Turn off the power switch on the instrument.

5 Deleting the upgrade data

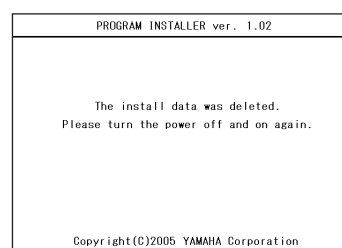
Press the **[BREAK]** button to call up the following display.



Press **[START/STOP]** button to start deleting the upgrade data from the USB device.



When the deletion of the upgrade data is completed, the following display appears.



The upgrade data has been deleted from the USB device. Turn off the power switch of the instrument and remove USB device.

Confirming the version number

Turn on the power of the instrument normally and wait until the main display appears.

- 1) Press the **[FUNCTION]** button, then select **[UTILITY]** -> **[OWNER]** tab.
- 2) Hold down the button corresponding to **[OWNER NAME]** for roughly five seconds, until the following display appears.
- 3) Check that the version number is correct for the upgrade, and turn off the power of the instrument.



Troubleshooting

The power supply was cut off or the USB device was removed during installation.

A complete reinstall is necessary. Perform the installation operation again from the beginning.

The installation cannot be executed and an error message appears in the display.

Check the following:

- ✓ Is the USB device inserted correctly?
 - ✓ Is the USB connector free from dust and dirt?
 - ✓ Is the USB memory or the firmware data itself damaged in some way?
- Try installing it again by using another USB device.