



# Acrobat Reader/File Utility/YAMAHA USB MIDI Driver Installation Guide/Installationsanleitung/ Manuel d'installation/Guía de instalación

## SPECIAL NOTICES

- The software and this Installation Guide are exclusive copyrights of Yamaha Corporation.
- Use of the software and this guide is governed by the SOFTWARE LICENSING AGREEMENT which the purchaser fully agrees to upon breaking the seal of the software packaging. (Please read carefully the AGREEMENT at the end of this guide before installing the application.)
- Copying of the software or reproduction of this guide in whole or in part by any means is expressly forbidden without the written consent of the manufacturer.
- Yamaha makes no representations or warranties with regard to the use of the software and documentation and cannot be held responsible for the results of the use of this guide and the software.
- This disc is a CD-ROM. Do not attempt to play the disc on an audio CD player. Doing so may result in irreparable damage to your audio CD player.
- Copying of the commercially available music data is strictly prohibited except for your personal use.
- The company names and product names in this Installation Guide are the trademarks or registered trademarks of their respective companies.
- Future upgrades of application and system software and any changes in specifications and functions will be announced separately.
- Depending on the version of your operating system, the screen shots and messages shown in this guide may differ to those that you see on your computer screen.

## BESONDERE HINWEISE

- Dieses Programm und diese Installationsanleitung sind im Sinne des Urheberrechts alleiniges Eigentum der Yamaha Corporation.
- Die Benutzung des Programms und dieser Anleitung unterliegt der SOFTWARE-LIZENZVEREINBARUNG, mit der sich der Erwerber durch Öffnen des Siegels der Programmverpackung uneingeschränkt einverstanden erklärt. (Bitte lesen Sie die VEREINBARUNG am Ende dieser Anleitung vor Installation der Anwendung sorgfältig durch.)
- Das Kopieren der Software und die Reproduktion dieser Anleitung, in welcher Form auch immer, in Teilen oder als Ganzes, sind nur mit schriftlicher Genehmigung des Herstellers erlaubt und sonst ausdrücklich verboten.
- Yamaha leistet keinerlei Garantie hinsichtlich der Benutzung des Programms und der zugehörigen Dokumentation und übernimmt keine Verantwortung für die Ergebnisse der Benutzung dieser Anleitung oder des Programms.
- Bei dieser CD handelt es sich um eine CD-ROM. Versuchen Sie bitte nicht, diese CD-ROM auf einem Audio-CD-Player abzuspielen, da dies zu irreparablen Schäden am Audio-CD-Player führen kann.
- Das Kopieren im Handel erhältlicher Musikdaten ist nur für Ihren Privatgebrauch zulässig und sonst streng untersagt.
- Die in dieser Installationsanleitung erwähnten Firmen- und Produktnamen sind Warenzeichen bzw. eingetragene Warenzeichen der betreffenden Firmen.
- Zukünftige Aktualisierungen von Anwendungs- und Systemsoftware sowie jede Änderung der technischen Daten und Funktionen werden separat bekanntgegeben.
- Je nach der Version Ihres Betriebssystems unterscheiden sich die hier dargestellten Screenshots und Meldungen von der tatsächlichen Anzeige auf Ihrem Computermonitor.

## REMARQUES PARTICULIERES

- Les droits d'auteurs (copyright) de ce logiciel et de ce manuel d'installation appartiennent exclusivement à Yamaha Corporation.
- L'usage de ce logiciel et de ce manuel est défini par l'accord de licence auquel l'acheteur déclare souscrire sans réserve lorsqu'il ouvre le sceau de l'emballage du logiciel. (Veuillez donc lire attentivement l'accord de licence du logiciel situé à la fin de ce manuel avant d'installer le logiciel.)
- Toute copie du logiciel et toute reproduction totale ou partielle de ce manuel, par quel moyen que ce soit, est expressément interdite sans l'autorisation écrite du fabricant.
- Yamaha n'offre aucune garantie en ce qui concerne l'utilisation du logiciel et de la documentation. Yamaha ne peut en aucun cas être tenu responsable des dommages éventuels résultant de l'utilisation de ce manuel et de ce logiciel.
- Ce disque est un CD-ROM. N'essayez donc pas de l'insérer dans un lecteur de CD audio. Vous risqueriez d'endommager ce dernier de manière irréversible.
- Toute copie de données musicales commercialisées est formellement interdite, sauf pour usage personnel.
- Les noms des firmes et des produits apparaissant dans ce manuel d'installation sont des marques commerciales ou des marques déposées appartenant à leurs détenteurs respectifs.
- Les remises à jour du programme et du système ainsi que toute modification des caractéristiques et fonctions seront annoncées séparément.
- En fonction de la version du système d'exploitation que vous utilisez, les captures d'écran et les messages qui figurent dans ce manuel peuvent différer de ceux qui apparaissent sur l'écran de votre ordinateur.

## AVISOS ESPECIALES

- El copyright del software y de la guía de instalación es propiedad exclusiva de Yamaha Corporation.
- La utilización de este software y de esta guía debe ajustarse al CONTRATO PARA USO DE SOFTWARE BAJO LICENCIA, con el que el comprador manifiesta su total conformidad al abrir el paquete de software. (Lea detenidamente el CONTRATO que se incluye al final de esta guía antes de instalar la aplicación).
- La copia del software o la reproducción total o parcial de este manual por cualquier medio sin la autorización escrita del fabricante está expresamente prohibida.
- Yamaha no asume responsabilidad alguna ni ofrece garantía alguna en relación con el uso del software y de la documentación, y no puede ser declarada responsable de los resultados de la utilización de este manual ni del software.
- Este disco es un CD-ROM. No intente reproducirlo en un reproductor de CD de audio, porque al hacerlo se podrían causar daños irreparables en el reproductor.
- Queda terminantemente prohibida la copia de datos musicales disponibles comercialmente, excepto para uso personal.
- Los nombres de compañías y de productos que aparecen en esta guía de instalación son marcas o marcas registradas de sus respectivas compañías.
- Las futuras actualizaciones de la aplicación y del software del sistema, y cualquier cambio en las especificaciones y funciones, se anunciarán independientemente.
- Según las versiones del sistema operativo, las capturas de pantalla y los mensajes que aparecen en esta guía podrían diferir de los que aparecen en la pantalla del ordenador.

English

Deutsch

Français

Español

## About Open Plug-in Technology

You can start the File Utility software as either a stand-alone software or a plug-in application in the Open Plug-in Technology compatible application.

Refer to the owner's manual of the client application (sequencer, etc.) for details on using the File Utility as a plug-in software.

Open Plug-in Technology (OPT) is a newly developed software format that allows control over MIDI devices from a music software sequencer. For example, this allows you to start up and operate various parts of your music system, such as plug-in board editors, and mixing control editors - directly from an OPT-compatible sequencer, without having to use each separately. This also makes it unnecessary to set MIDI drivers for each application, streamlining your music production system and making all operations more convenient and seamless.

### About the OPT Levels

The client application and its compatibility with OPT can be divided into three levels, as shown below.



**Level 1** – OPT Panels provides basic support for opening and displaying OPT control panels that can transmit data via the clients' external MIDI ports.

Typically this will allow basic hardware editor control panels to operate properly.



**Level 2** – OPT Processors provides support for real-time MIDI processors and panel automation.




Typically this will allow both real-time and offline MIDI effects (e.g. Arpeggiators, transposers etc.) to operate properly and supply automation to OPT panels.



**Level 3** – OPT Views provides support for edit views and MIDI processors/panels that require direct access to client sequencer storage structures. Typically this will allow sophisticated MIDI edit views to be supported (e.g. List editors, Auto Accompaniment, Data Checkers etc.).

## OPT Level Implementation for the File Utility

This chart shows the OPT-compatibility of the File Utility.

OPT levels of the client application	File Utility operation	
	Operation support	Operation limits
VIEWS (Level3) 	Yes	None
PROCESSORS (Level2) 	Yes	None
PANELS (Level1) 	No	—

### NOTE

- Certain operations may not work as expected if there is no corresponding function in the client application (sequencer, etc.). The highest level of implementation for the client application is indicated in the OPT logo (which appears along with the version information in the application).

## Software Installation

### NOTE

- For details about the application software which has no installation guide described below, refer to the online manual of each software.

### Uninstall (Removing the installed application)

You can remove the installed application software.  
Select [START] → [Settings] → [Control Panel] → [Add/Remove Programs] → [Install/Uninstall], then select the application to be removed and click [Add/Remove...].  
Follow the on-screen instructions to uninstall the application.

### NOTE

- The button names or menus may differ depending on the computer OS.

## ■ Acrobat Reader

In order to view the electronic (PDF) manuals included with each application, you'll need to install Acrobat Reader.

### NOTE

- If an older version of Acrobat Reader is installed on your PC, you'll need to uninstall it before proceeding.

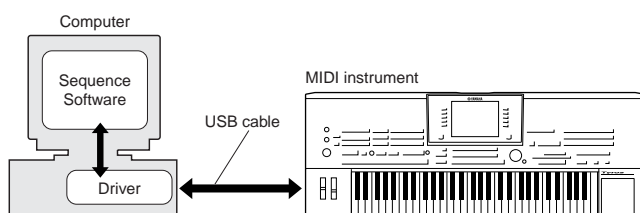
- Double-click on the "Acroread\_" folder.  
Four different language folders will be displayed.
- Select the language you want to use and double-click on its folder.  
The file "ar\*\*\*.exe" file will be displayed. ("\*\*\*" indicates the selected language.)
- Double-click on "ar\*\*\*.exe."  
Acrobat Reader Setup Dialog box will be displayed.
- Execute the installation by following the on-screen directions.

After installation is complete, the Acrobat folder appears on your PC (in Program Files, as the default).

For information on using the Acrobat Reader, refer to the Reader Guide in the Help menu.

## ■ USB MIDI Driver

To operate the MIDI instrument from your computer via USB, you'll need to install the appropriate driver software.  
The USB-MIDI driver is software that transfers MIDI data back and forth between sequence software and the MIDI instrument via a USB cable.



- Windows 98/Me users See below.
- Windows 2000 users See page 4.
- Windows XP users See page 5.

### NOTE

- Before you install the USB MIDI driver, you can minimize the possibility of problems by putting your computer in the following state.
  - Close all applications and windows that you are not using.
  - Disconnect all cables from the MIDI instrument except for the cable whose driver you are installing.

## Installing the driver on a Windows 98/Me system

- Start the computer.
- Insert the included CD-ROM into the CD-ROM drive.
- Make sure the POWER switch on the MIDI instrument is set to OFF and use the USB cable to connect the USB terminal of the computer (or the USB hub) to the USB terminal of the MIDI instrument. When the MIDI instrument is turned on, the computer automatically displays the "Add New Hardware Wizard." If the Add New Hardware Wizard does not appear, click "Add New Hardware" in the Control Panel.

### NOTE

- In Windows Me, check the radio button to the left of "Automatic search for a better driver (Recommended)" and click [Next]. The system automatically starts searching and installing the driver. Proceed to step #8. If the system does not detect the driver, select "Specify the location of the driver (Advanced)" and specify the CD-ROM drive's "USBdrv\_" to install the driver.

### Windows 98



### Windows Me



- 4** Click [Next].  
The window below enables you to select the search method.



- 5** Check the radio button to the left of “Search for the best driver for your device. (Recommended).” Click [Next].  
The window that enables you to select a location in which to install the driver appears.
- 6** Check the “CD-ROM drive” box and uncheck all other items. Click [Next].

**NOTE**

- The system may ask you to insert a Windows CD-ROM while it checks for the driver. Specify the “USBdrv\_” directory of the CD-ROM drive (such as D:\USBdrv\_) and continue the installation.
- When Using the Windows 98, specify the “USBdrv\_” directory of the CD-ROM drive (such as D:\USBdrv\_) and continue the installation.

- 7** When the system detects the driver on the CD-ROM and is ready for installation, it displays the following screen. Make sure that the “YAMAHA USB MIDI Driver” is listed, and click [Next]. The system starts the installation.



**NOTE**

- The location of the driver may differ depending on the particular model or computer platform used.

- 8** When the installation is complete, the following screen appears. Click [Finish].

**NOTE**

- Some computers may take about ten seconds to show this screen after the installation is complete.

**Windows 98**



**Windows Me**



The driver has been installed.

**Installing the driver on a Windows 2000 system**

- 1** Start the computer and use the “Administrator” account to log into Windows 2000.
- 2** Select [My Computer] → [Control Panel] → [System] → [Hardware] → [Driver Signing] → [File Signature Verification], and check the radio button to the left of “Ignore -Install all files, regardless of file signature” and click [OK].
- 3** Insert the included CD-ROM into the CD-ROM drive.
- 4** Make sure the POWER switch on the MIDI instrument is set to OFF and use the USB cable to connect the USB terminal of the computer (or the USB hub) to the USB terminal of the MIDI instrument. When the MIDI instrument is turned on, the computer automatically displays the “Found New Hardware Wizard.” Click [Next].

- 5** Check the radio button to the left of “Search for a suitable driver for my device. (Recommended).” Click [Next].  
The window that appears enables you to select a location in which to install the driver.
- 6** Check the “CD-ROM drives” box and uncheck all other items. Click [Next].

**NOTE**

- The system may ask you to insert a Windows CD-ROM while it checks for the driver. Specify the “USBdrv2k\_” directory of the CD-ROM drive (such as D:\USBdrv2k\_) and continue the installation.

- 7** When the installation is complete, the system displays “Completing the Found New Hardware Wizard.” Click [Finish].

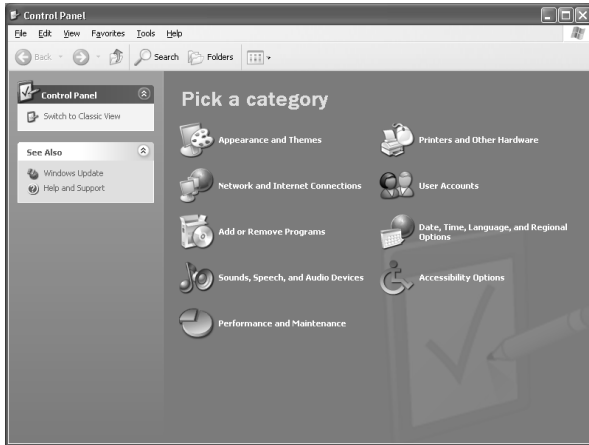
**NOTE**

- Some computers may take about ten seconds to show this screen after the installation is complete.

- 8** Restart the computer.  
The driver has been installed.

## Installing the driver on a Windows XP system

- 1 Start the computer.
- 2 Select [Start] → [Control Panel].  
If the control panel appears as shown below, click “Switch to Classic View” in the upper left of the window.  
All control panels and icons will be displayed.



- 3 Go to [System] → [Hardware] → [Driver Signing] → [File Signature Verification], and check the radio button to the left of “Ignore -Install all files, regardless of file signature” and click [OK].
- 4 Click the [OK] button to close System Properties, and then click “X” in the upper right of the window to close the Control Panel.
- 5 Insert the included CD-ROM into the CD-ROM drive.
- 6 Make sure the POWER switch on the MIDI instrument is set to OFF and use the USB cable to connect the USB terminal of the computer (or the USB hub) to the USB terminal of the MIDI instrument. When the MIDI instrument is turned on, the computer automatically displays the “Found New Hardware Wizard.”
- 7 Check the radio button to the left of “Search for a suitable driver for my device. (Recommended).” Click [Next].  
The system starts the installation.
- 8 When the installation is complete, the system displays “Completing the Found New Hardware Wizard.” Click [Finish].

### NOTE

- Some computers may take about ten seconds to show this screen after the installation is complete.

- 9 Restart the computer.  
The driver has been installed.

## ■ File Utility

Once you’ve installed these software programs, you can use your computer to organize data saved to the User/FD/HD drive in the MIDI instrument.

- 1 Double-click on the “FileUtil\_” folder in the CD-ROM.  
The file “setup.exe” will be displayed.
- 2 Double-click on the “setup.exe” file.  
The MIDI instrument Tools setup dialog will be displayed.

- 3 Execute the installation by following the on-screen directions.

For details, refer to the on-line Help or the PDF owner’s manual.

## MIDI port setting (when starting the software as a stand-alone application)

Before setting the MIDI port on the File Utility, you should set the MIDI port from the MIDI SETUP toolbar.

### NOTE

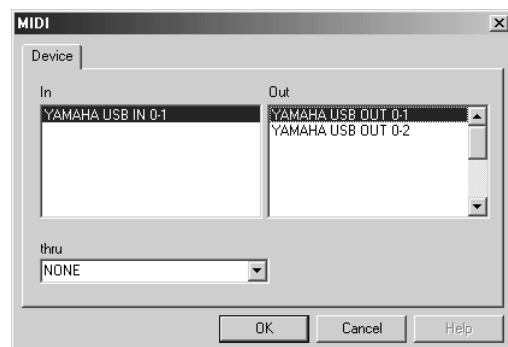
- When you start the File Utility as a plug-in application in the Open Plug-in Technology compatible application, refer to the the PDF manual for the respective software.

- 1 Start the File Utility.
- 2 Click the MIDI Setup button in the Toolbar called up via step #1.



MIDI Setup button

- 3 In the MIDI Setup window called up via step #2, click the [▼] button at the right end of each box and make the port settings as shown.



### NOTE

- In order for MIDI ports to be available here, you’ll need to select the relevant MIDI port within File Utility. This is the port that will be used in the relevant MIDI applications. For details on setting the MIDI port, refer to the on-line manual of File Utility.

## Software Installation

### ■ Acrobat Reader

In order to view the electronic (PDF) manuals included with each application, you'll need to install Acrobat Reader.

- 1 Double-click on the "Acroread\_" folder. Four different language folders will be displayed: English, German, French and Spanish.
- 2 Select the language you want to use and double-click on its folder. "Reader Installer" will be displayed. The Installer name may differ depending on the language you select.
- 3 Double-click on the "Reader Installer." Acrobat Reader Setup Dialog will be displayed.
- 4 Execute the installation by following the directions appearing on the screen. After installation is complete, the Acrobat folder appears on your computer (in Hard Disk, as the default). For information on using the Acrobat Reader, refer to the Reader Guide in the Help menu.

### ■ Open Music System (OMS)

OMS allows you to use several MIDI applications on the Mac OS at the same time.

- 1 Double-click on the "OMS\_" folder (English version only). "Install OMS \*\*\*\*\*" will be displayed.
- 2 Double-click on "Install OMS \*\*\*\*\*." OMS Setup Dialog will be displayed.
- 3 Execute the installation by following the on-screen directions. After the installation, select "Restart."

#### NOTE

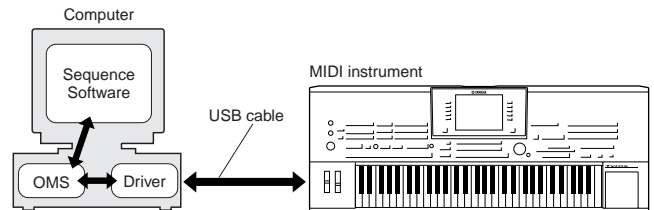
- After the installation is complete, you may possibly encounter an error message warning that the installer did not close. In this case, go to the "File" menu and select "Quit" to close the installer. Then reboot the computer.

After restarting the Macintosh, you will find the "Opcode"/"OMS Applications" folder on your computer (Hard Disk, as the default).

- 4 Copy the "OMS\_\*\*\*\_Mac.pdf" in the CD-ROM to the "OMS Applications" folder (drag-and-drop it to the folder). Refer to the "OMS\_\*\*\*\_Mac.pdf" (English version only) how to use the application.
- 5 Copy the "OMS Setup for YAMAHA" in the CD-ROM to the "OMS Applications" folder (drag-and-drop it to the folder). In the "OMS Setup for YAMAHA" folder you will find the OMS Setup files for the Yamaha tone generators, which can be used as templates.

### ■ USB MIDI Driver

To operate the MIDI instrument from your computer via USB, you'll need to install the appropriate driver software. The USB-MIDI driver is software that transfers MIDI data back and forth between sequence software and the MIDI instrument via a USB cable.



First install OMS before you install the USB-MIDI driver. Also, after installing the driver, you will need to set up OMS (see page 7).

- 1 Start the computer.
- 2 Insert the included CD-ROM into the CD-ROM drive. The system displays the CD-ROM icon on the desktop.
- 3 Double-click the CD-ROM icon and double-click the "Install USB Driver" icon in the "USBdrv\_" folder to display the following installation screen.



- 4 The "Install Location" box displays the destination of the installation. If you wish to change the destination disk or folder, use the [Switch Disk] button and the pop-up menu to specify the desired destination.

#### NOTE

- This box usually displays the start-up disk as the destination.

- 5 Click the [Install] button. The system displays the following message: "This installation requires your computer to restart after installing this software. Click Continue to automatically quit all other running applications." Click [Continue].

#### NOTE

- To cancel the installation, click [Cancel].

- 6** The installation starts. If the driver has already been installed, the following message appears. To return to step #3, press [Continue]. To complete the installation, click [Quit].



- 7** When the installation is complete, the system displays the following message: "Installation was successful. You have installed software which requires you to restart your computer." Click [Restart]. The computer automatically restarts. You can locate the installed files in the following locations:

- [System Folder] → [Control Panels] → [YAMAHA USB MIDI Patch]
- [System Folder] → [Extensions] → [USB YAMAHA MIDI Driver]
- [System Folder] → [OMS Folder] → [YAMAHA USB MIDI OMS Driver]

## ■ File Utility

Once you've installed the File Utility, you can use your computer to access and organize data saved to the User/FD/HD drive in the MIDI instrument.

- 1** Double-click on the "FileUtil\_" folder in the CD-ROM. "Install File Utility" file will be displayed.
- 2** Double-click on the "Install File Utility" file. The File Utility installation dialog will be displayed. Execute the installation by following the on-screen directions.
- 3** After installing, restart the computer.

For details, refer to the on-line Help or the PDF owner's manual.

## Setting up OMS

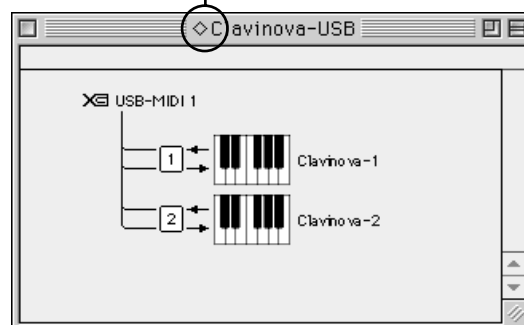
The OMS studio setup file for the MIDI instrument is contained in the included CD-ROM. This studio setup file is used for setting up OMS.

### NOTE

- Before performing the following procedure, the OMS and USB MIDI Driver should be installed (see page 6).

- 1** Use a USB cable to connect the USB terminal of the computer (or the USB hub) to the USB terminal of the MIDI instrument and turn the MIDI instrument' power on.
- 2** Start the computer.
- 3** Insert the included CD-ROM into the CD-ROM drive of your Macintosh computer. The CD-ROM icon appears on the desktop.
- 4** Double-click on the CD-ROM icon, "OMS\_", and "OMS Setup for YAMAHA." The file "\*\*\*\*\*-USB" appears. ("\*\*\*\*\*" indicates the product name, etc.) Copy this to the hard disk on your computer.
- 5** Double-click on the "\*\*\*\*\*-USB" file to start the OMS Setup.
- 6** After starting the OMS Setup, the Studio setup file double-clicked in step #5 opens.

Indicates this setup is available



### NOTE

- The name of the title and port may differ depending on the particular model used.
- If "◇" is not indicated at the right of the setup file name, select "Make Current" from the "File" menu and execute the save operation.

The OMS studio setup has been completed.

### NOTE

- After the OMS studio setup above has been completed, your computer will recognize only the MIDI instrument as a MIDI instrument. If you use another MIDI instrument in addition to the MIDI instrument or you add a second MIDI instrument to the existing system, you should create an original Studio Setup file. For details, refer to the on-line manual supplied with the OMS.

Depending on the Macintosh and operating system version that you are using, the included studio setup file for the MIDI instrument still may not work even after you have performed the above steps. (MIDI transmission and reception will not be possible even if the setup is valid.)

In this case, use the following procedure to re-create the setup file.

- 1** Connect the MIDI instrument and Macintosh via USB cable, and turn on the power of the MIDI instrument.
- 2** Start up OMS Setup, and from the “File” menu, choose “New setup.”
- 3** The OMS driver search dialog box will appear. Uncheck both [Modem] and [Printer] if you are using a USB connection.
- 4** Click the [Find] button to search for the device. When a device has been found, the OMS Driver Setting dialog box will display “USB-MIDI.”
  - If the device was found correctly, click the [OK] button to proceed.
  - If the device was not found, re-check that the cable connections are correct, and repeat the procedure from step #1.
- 5** Make sure that the port is shown below the device that was found. (This will be a name such as USB-MIDI.) Check the check box for the port, and then click the [OK] button.
- 6** A dialog box will appear, allowing you to name the file that will be saved. Input the desired filename, and click [Save]. This completes the OMS setup.
- 7** From the “Studio” menu, choose “Test,” and click the port icon. If a channel sounds on the MIDI instrument, the system is operating correctly.

For details on using OMS, refer to “OMS\_\*\*\*\_Mac.pdf,” included with OMS.



## The driver cannot be installed.

- Is the USB cable connected correctly?
  - Check the USB cable connection.
  - Disconnect the USB cable, then connect it again.

### Windows

- Is the USB function enabled on your computer?
  - When you connect the MIDI instrument to the computer for the first time, if the “Add New Hardware Wizard” does not appear, the USB function on the computer may be disabled (see pages 3, 4). Perform the following steps.
    - 1** Select [Control Panel] → [System] → [Device Manager] (for Windows 98/Me), or select [Control Panel] (Windows XP: Classic View) → [System] → [Hardware] → [Device Manager] (for Windows 2000/XP).
    - 2** Make sure that no “!” or “x” marks appear at “Universal serial bus controller” or “USB Root Hub.” If you see an “!” or “x” mark, the USB controller is disabled. For more information, refer to the owner’s manual of your computer.

### Windows

- Is any unknown device registered?
  - If driver installation fails, the MIDI instrument will be marked as an “Unknown device,” and you will not be able to install the driver. Delete the “Unknown device” by following the steps below.
    - 1** Select [Control Panel] → [System] → [Device Manager] (for Windows 98/Me), or select [Control Panel] (Windows XP: Classic View) → [System] → [Hardware] → [Device Manager] (for Windows 2000/XP).
    - 2** Look for “Other devices” in the menu “View devices by type.”
    - 3** If you find “Other devices,” double-click it to extend the tree to look for “Unknown device.” If one appears, select it and click the [Remove] button.
    - 4** Remove the USB cable from the MIDI instrument, and make the connection again.
    - 5** Install the driver again.
      - Windows 98/Me users See page 3.
      - Windows 2000 users See page 4.
      - Windows XP users See page 5.

## When controlling the MIDI instrument from your computer via USB, the MIDI instrument does not operate correctly or no sound is heard.

- Did you install the driver?
  - Windows users See page 3.
  - Macintosh users See page 6.
- Is the USB cable connected correctly?
- Are the volume settings of the tone generator, playback device, and application program set to the appropriate levels?
- Have you selected an appropriate port in the sequence software?

- Are you using the latest USB MIDI driver?
  - The latest driver can be downloaded from the following web site.  
<http://www.yamahasynth.com/>

## Playback response is delayed.

- Does your computer satisfy the system requirements?
- Is any other application or device driver running?

### Macintosh

- Turn off virtual memory.
- Disable AppleTalk.

## Cannot suspend or resume the computer correctly.

- Do not suspend the computer while the MIDI application is running.
- If you are using Windows 2000, you may not be able to suspend/resume normally, depending on the particular environment (USB Host Controller, etc.). Even so, simply disconnecting and connecting the USB cable will allow you to use the MIDI instrument functions again.

## How can I delete or re-install the driver?

### Windows Me/98

- 1** When the MIDI instrument is recognized correctly, double-click “System” in the Control Panel to open the System window.
- 2** Double-click the “Device Manager” tab, select “YAMAHA USB MIDI Driver” and delete it.
- 3** Use the MS-DOS prompt or Explorer to delete the following three files.
  - \WINDOWS\INF\OTHER\YAMAHAMIDI instrument.INF
  - \WINDOWS\SYSTEM\Xgusb.driv
  - \WINDOWS\SYSTEM\Ymidusb.sys

#### NOTE

- To delete the above files using Explorer, select “Folder Options” from the Tool (View) menu, and select “Show all files (and folders).”

- 4** Disconnect the USB cable.
- 5** Restart the computer.
- 6** Re-install the driver (see page 3).

### Macintosh

- 1** Delete the files in the following locations:
  - [System Folder] → [Control Panels] → [YAMAHA USB MIDI Patch]
  - [System Folder] → [Extensions] → [USB YAMAHA MIDI Driver]
  - [System Folder] → [OMS Folder] → [YAMAHA USB MIDI OMS Driver]
- 2** Restart the computer.
- 3** Install the driver (see page 6) and set up OMS (see page 7).

# SOFTWARE LICENSING AGREEMENT

---

The following is a legal agreement between you, the end user, and Yamaha Corporation (“Yamaha”). The enclosed Yamaha software program is licensed by Yamaha to the original purchaser for use only on the terms set forth herein. Please read this licensing agreement with care. Opening this package indicates that you accept all terms outlined herein. If you do not agree to the terms, return this package unopened to Yamaha for a full refund.

## 1. GRANT OF LICENSE AND COPYRIGHT

---

Yamaha grants you, the original purchaser, the right to use one copy of the enclosed software program and data (“SOFTWARE”) on a single-user computer system. You may not use it on more than one computer or computer terminal. The SOFTWARE is owned by Yamaha and is protected by Japanese copyright laws and all applicable international treaty provisions. You are entitled to claim ownership of the media in which the SOFTWARE is included. Therefore, you must treat the SOFTWARE like any other copyrighted materials.

## 2. RESTRICTIONS

---

The SOFTWARE program is copyrighted. You may not engage in reverse engineering or reproduction of the SOFTWARE by other conceivable methods. You may not reproduce, modify, change, rent, lease, resell, or distribute the SOFTWARE in whole or in part, or create derivative works from the SOFTWARE. You may not transmit or network the SOFTWARE with other computers. You may transfer ownership of the SOFTWARE and the accompanying written materials on a permanent basis provided that you retain no copies and the recipient agrees to the terms of the licensing agreement.

## 3. TERMINATION

---

The licensing condition of the software program becomes effective on the day that you receive the SOFTWARE. If any one of the copyright laws or clauses of the licensing conditions is violated, the licensing agreement shall be terminated automatically without notice from Yamaha. In this case, you must destroy the licensed SOFTWARE and its copies immediately.

## 4. PRODUCT WARRANTY

---

Yamaha warrants to the original purchaser that if the SOFTWARE, when used in normal conditions, will not perform the functions described in the manual provided by Yamaha, the sole remedy will be that Yamaha will replace any media which proves defective in materials or workmanship on an exchange basis without charge. Except as expressly set forth above, the SOFTWARE is provided “as is,” and no other warranties, either expressed or implied, are made with respect to this software, including, without limitation the implied warranties of merchantability and fitness for a particular purpose.

## 5. LIMITED LIABILITY

---

Your sole remedies and Yamaha’s entire liability are as set forth above. In no event will Yamaha be liable to you or any other person for any damages, including without limitation any incidental or consequential damages, expenses, lost profits, lost savings or other damages arising out of the use or inability to use such SOFTWARE even if Yamaha or an authorized dealer has been advised of the possibility of such damages, or for any claim by any other party.

## 6. GENERAL

---

This license agreement shall be interpreted according to and governed by Japanese laws.

# SOFTWARE-LIZENZVEREINBARUNG

---

Die folgende Vereinbarung ist eine rechtsgültige Vereinbarung zwischen Ihnen, dem Endanwender, und der Yamaha Corporation ("Yamaha"). Yamaha erteilt dem ursprünglichen Käufer für das beiliegende Yamaha-Softwareprogramm ausschließlich zu den hier ausgeführten Bedingungen eine Lizenz zur Verwendung. Bitte lesen Sie diese Lizenzvereinbarung sorgfältig. Durch das Öffnen dieser Packung bringen Sie zum Ausdruck, daß Sie alle darin enthaltenen Bedingungen akzeptieren. Wenn Sie nicht mit den Bedingungen einverstanden sind, können Sie die Packung ungeöffnet an Yamaha zurückgeben; der Kaufpreis wird in voller Höhe zurückerstattet.

## 1. ERETLUNG VON LIZENZ UND COPYRIGHT

---

Yamaha erteilt Ihnen, dem ursprünglichen Käufer, das Recht, ein Exemplar des beiliegenden Softwareprogramms und der darin enthaltenen Daten ("SOFTWARE") als Einzelperson auf jeweils einem Computer zu verwenden. Sie dürfen sie nicht auf mehr als einem Computer bzw. einer Computerstation verwenden. Die SOFTWARE bleibt im Besitz von Yamaha und ist durch japanische Copyrightgesetze sowie alle anwendbaren internationalen Vertragsbestimmungen geschützt. Sie haben ein Anspruchsrecht auf das Eigentum an den Medien, denen die SOFTWARE beiliegt. Daher müssen Sie die SOFTWARE wie alle anderen durch Copyright geschützten Materialien behandeln.

## 2. EINSCHRÄNKUNGEN

---

Die SOFTWARE ist durch Copyright geschützt. Sie dürfen Sie weder analysieren noch durch anderweitige Methoden reproduzieren. Sie dürfen die SOFTWARE weder ganz noch teilweise reproduzieren, modifizieren, verändern, gegen Entgelt oder unentgeltlich verleihen, verkaufen oder vertreiben, und Sie dürfen auf der Grundlage der SOFTWARE keine Ableitungen erstellen. Sie dürfen die SOFTWARE nicht an andere Computer senden oder in Netzwerke einspeisen. Sie dürfen das Eigentum an der SOFTWARE und den schriftlichen Begleitmaterialien auf unbefristeter Basis unter den Voraussetzungen übertragen, daß Sie keine Kopien zurückbehalten und sich der Empfänger mit den Bedingungen der Lizenzvereinbarung einverstanden erklärt.

## 3. BEENDIGUNG

---

Die Lizenzbedingung des Softwareprogramms wird am Tag, an dem Sie die SOFTWARE erhalten, wirksam. Falls ein Copyrightgesetz oder eine Bestimmung der Lizenzbedingungen verletzt wird, wird automatisch und ohne Benachrichtigung durch Yamaha die Lizenzvereinbarung beendet. In diesem Fall müssen Sie die lizenzierte SOFTWARE und ihre Kopien unverzüglich vernichten.

## 4. PRODUKTGARANTIE

---

Yamaha garantiert dem ursprünglichen Käufer, daß, falls die SOFTWARE bei Verwendung unter normalen Bedingungen nicht die in der von Yamaha bereitgestellten Anleitung beschriebenen Funktionen erfüllt, die einzige Abhilfe darin bestehen wird, daß Yamaha auf Austauschbasis kostenlos jedes Medium ersetzen wird, das Material- oder Verarbeitungsfehler aufweist. Abgesehen von dem oben Ausgeführten wird die SOFTWARE "wie die Ware liegt und steht" geliefert, und es werden keine anderen ausdrücklichen oder stillschweigenden Garantien hinsichtlich dieser Software übernommen, einschließlich, aber nicht beschränkt auf, die stillschweigenden Garantien für handelsübliche Qualität und Eignung für einen bestimmten Einsatzzweck.

## 5. BESCHRÄNKTE HAFTUNG

---

Ihre einzige Abhilfe und die gesamte Haftung Yamahas bestehen in dem oben Ausgeführten. Keinesfalls haftet Yamaha Ihnen oder einer anderen Person gegenüber für etwaige Schäden, einschließlich, aber nicht beschränkt auf, zufällige Schäden oder Folgeschäden, Kosten, Verdienstausschlag, verlorene Ersparnisse oder andere Schadenersatzansprüche, die aus der Verwendung der SOFTWARE oder aus der Tatsache hervorgehen, daß diese SOFTWARE nicht verwendet werden konnte, selbst wenn Yamaha oder ein autorisierter Händler über die Möglichkeit derartiger Schadenersatzansprüche informiert wurde, oder für etwaige andere Ansprüche einer anderen Partei.

## 6. ALLGEMEINES

---

Diese Lizenzvereinbarung soll gemäß und in Übereinstimmung mit den japanischen Gesetzen ausgelegt werden.

# CONTRAT DE LICENCE DE LOGICIEL

---

Ceci est un contrat entre vous-même, l'utilisateur final, et Yamaha Corporation (« Yamaha »). Le logiciel Yamaha ci-inclus est concédé sous licence par Yamaha à l'acheteur original et ne peut être utilisé que dans les conditions prévues aux présentes. Veuillez lire attentivement ce contrat de licence. Le fait d'ouvrir ce coffret indique que vous acceptez l'ensemble des termes du contrat. Si vous n'acceptez pas lesdits termes, renvoyez le coffret non ouvert à Yamaha pour en obtenir le remboursement intégral.

## 1. CONCESSION DE LICENCE ET DROITS D'AUTEUR

---

Yamaha vous concède le droit d'utiliser, en tant qu'acheteur original, un exemplaire du logiciel et des données afférentes à celui-ci (« LOGICIEL ») sur un ordinateur pour utilisateur unique. Vous n'êtes pas autorisé à utiliser ces éléments sur plus d'un ordinateur ou terminal d'ordinateur. Le LOGICIEL est la propriété de Yamaha. Il est protégé par les dispositions relatives au droit d'auteur contenues dans la législation japonaise et les traités internationaux. Vous êtes en droit de revendiquer l'appartenance du support du LOGICIEL. A ce titre, vous devez traiter le LOGICIEL comme tout autre élément protégé par le droit d'auteur.

## 2. RESTRICTIONS

---

Le LOGICIEL est protégé par le droit d'auteur. Vous n'êtes pas autorisé à reconstituer la logique du LOGICIEL ou à reproduire ce dernier par quelque autre moyen que ce soit. Vous n'êtes pas en droit de reproduire, modifier, prêter, louer, revendre ou distribuer le LOGICIEL en tout ou partie, ou d'utiliser le LOGICIEL à des fins de création dérivée. Vous n'êtes pas autorisé à transmettre le LOGICIEL à d'autres ordinateurs ou à l'utiliser en réseau.

Vous êtes en droit de céder, à titre permanent, le LOGICIEL et la documentation imprimée qui l'accompagne, sous réserve que vous n'en conserviez aucun exemplaire et que le bénéficiaire accepte les termes du présent contrat.

## 3. RESILIATION

---

Les conditions énoncées dans le présent contrat de licence prennent effet à compter du jour où le LOGICIEL vous est remis. Si l'une quelconque des dispositions relatives au droit d'auteur ou des clauses du contrat ne sont pas respectées, le contrat de licence sera résilié de plein droit par Yamaha, ce sans préavis. Dans ce cas, vous devrez immédiatement détruire le LOGICIEL concédé sous licence ainsi que les copies réalisées.

## 4. GARANTIE PRODUIT

---

Si, dans des conditions normales d'utilisation, le LOGICIEL ne remplit pas les fonctions décrites dans le manuel fourni, Yamaha s'engage vis-à-vis de l'acheteur original à remplacer gratuitement, sur la base d'un échange, tout support reconnu défectueux par suite d'un défaut de matière première ou d'un vice de fabrication. Ceci constitue le seul recours opposable à Yamaha. Hormis dans les cas expressément énoncés plus haut, le LOGICIEL est livré « en l'état » et toute autre garantie expresse ou implicite le concernant, y compris, de manière non limitative, toute garantie implicite de qualité marchande et d'adéquation à un usage particulier, est exclue.

## 5. RESPONSABILITE LIMITEE

---

Votre unique recours et la seule responsabilité de Yamaha sont tels qu'énoncés précédemment. En aucun cas Yamaha ne pourra être tenu responsable, par vous-même ou une autre personne, de quelques dommages que ce soit, notamment et de manière non limitative, de dommages indirects, frais, pertes de bénéfices, pertes de fonds ou d'autres dommages résultant de l'utilisation ou de l'impossibilité d'utiliser le LOGICIEL, même si Yamaha ou un distributeur agréé ont été prévenus de l'éventualité de tels dommages, ou de quelque autre revendication formulée par une tierce partie.

## 6. REMARQUE GENERALE

---

Le présent contrat de licence est régi par le droit japonais, à la lumière duquel il doit être interprété.

# CONTRATO DE LICENCIA DE SOFTWARE

---

El presente es un acuerdo legal entre usted, el usuario final, y Yamaha Corporation (“Yamaha”). El programa Yamaha incluido está licenciado por Yamaha al comprador original para utilizar únicamente según los términos establecidos aquí. Lea atentamente este contrato de licencia. La apertura de este paquete supone la aceptación de todas las condiciones descritas aquí. Si no acepta los términos de este acuerdo, devuelva este paquete intacto a Yamaha para una devolución total del importe pagado.

## 1. CESIÓN DE LICENCIA Y COPYRIGHT

---

Yamaha cede, al comprador original, el derecho a utilizar una copia del programa e información incluidos (“SOFTWARE”) en un sistema informático de un solo usuario. No puede utilizarlo en más de un ordenador o terminal. El SOFTWARE es propiedad de Yamaha y está protegido por las leyes japonesas de copyright y por todas las provisiones de los tratados internacionales de copyright. Tiene derecho a reclamar la propiedad del soporte en el que se incluye el SOFTWARE. Por consiguiente, debe considerar el SOFTWARE de igual forma que otros materiales sujetos a copyright.

## 2. RESTRICCIONES

---

El SOFTWARE está sujeto a copyright. No debe desmontar ni analizar el SOFTWARE por otros métodos concebibles. No puede reproducir, modificar, cambiar, alquilar, arrendar, revender, o distribuir el SOFTWARE, en todo o en parte, o crear trabajos derivados del mismo. No puede transmitir ni utilizar en red el SOFTWARE con otros ordenadores. Puede transferir la propiedad del SOFTWARE y los materiales escritos que acompañan al mismo de forma permanente siempre que no realice copias y que el destinatario acepte los términos de este acuerdo de licencia.

## 3. FINALIZACIÓN

---

La condición de licencia del programa es efectiva en el día que reciba el SOFTWARE. Si se infringe alguna de las leyes o cláusulas de copyright de las condiciones de licencia, el acuerdo de licencia se considerará finalizado de forma automática sin previo aviso por Yamaha. En este caso, debe destruir el SOFTWARE con licencia y sus copias inmediatamente.

## 4. GARANTÍA DEL PRODUCTO

---

Yamaha garantiza al comprador original que si el SOFTWARE, utilizado en condiciones normales, no realiza las funciones descritas en el manual proporcionado por Yamaha, lo único que hará Yamaha será sustituir cualquier soporte que sea defectuoso, tanto en lo que se refiere a materiales como a mano de obra, cambiándolo sin cargo alguno. Excepto en los términos anteriores, el SOFTWARE se entrega “tal cual,” y sin garantías de ningún tipo, expresas o implícitas, incluyendo, sin limitaciones las garantías implicadas de comerciabilidad y de conveniencia para un propósito particular.

## 5. RESPONSABILIDAD LIMITADA

---

Su único recurso y la total responsabilidad de Yamaha son los anteriormente establecidos. En ningún caso Yamaha será responsable ante el usuario o ante cualquier otra persona por daños, sin limitaciones de daños indirectos o imprevistos, gastos, pérdidas, u otros daños causados por el uso o la poca habilidad en el uso de dicho SOFTWARE aunque Yamaha o un distribuidor autorizado le haya advertido de la posibilidad de estos daños, o reclamaciones de cualquier otra parte.

## 6. GENERAL

---

Este acuerdo de licencia se rige y elabora de acuerdo con las leyes japonesas.

# MEMO

---

---

---

---

---

---

---

---

---

---

---

---

---

---

---

---

---

---

---

---

---

---

---

---

---

---

---

---

---

---

# MEMO

---

---

---

---

---

---

---

---

---

---

---

---

---

---

---

---

---

---

---

---

---

---

---



Yamaha Manual Library  
<http://www2.yamaha.co.jp/manual/english/>

M.D.G., Pro Audio & Digital Musical Instrument Division, Yamaha Corporation  
© 2003 Yamaha Corporation

WA99140 ???AP???.?-0?B0 Printed in Indonesia